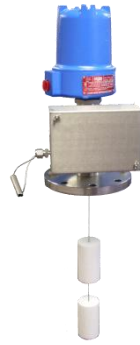


Nothing Compares

GSI - High Level Alarm Switch



The GSI High Level Alarm Switch is a secondary device for the prevention of tank overflow during movements. It is completely independent from the primary level or mass tank gauge system. If the primary system fails, the secondary system is still intact to prevent mishap. Our higher standard of quality and reliability makes the GSI HLAS the best pick for your tank gauge.

Gauging Systems Inc.	Competitors
<ul style="list-style-type: none">• Redundant relay output per alarm level• Built to meet API 2350 guide lines• Enclosed stainless steel checker box, making easy use in snow or ice• Checker Well Assembly Option• Low Trouble Shooting• Spread Spectrum Radio & Cellular Telemetry• Self-Checking Configuration• One opening from the tank	<ul style="list-style-type: none">• Unreliable Radar Technology• Unreliable Moving Parts• Moving Armatures for Switch Mounting• Terminal Strips• Lead Displacers, Porcelain Displacers, Ceramic Displacers (all sinkable)• Mercury Switches• Magnets in the float (that attract metal causing corrosion)• Exposed Return Spring• Costly Repairs

For more information please visit us at www.gaugingsystemsinc.com

